

2025 Year 11 Annual Activity Survey (Moving on Survey)

Description of what is in the dashboard

The survey relates to the activity of all young people who have reached the compulsory school leaving age in 2025 on or around 1 November 2025. Those pupils with unknown or NEET destinations, may have since established an alternative destination, but this is not presented here. Other school/college and unknown employer destinations refer to pupils that have an EET (Education Employment Training) status, however the specific establishment name is unknown. Please note that some destinations have been suppressed due to sensitivity. This dashboard also includes the 2025 September Guarantee information for these pupils.

Key Headlines

Percentage of West Sussex Young People in EET

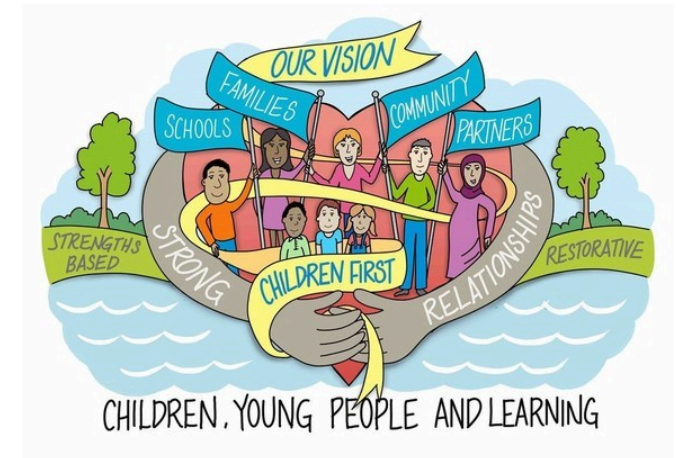
94.6%

Percentage of West Sussex Young People in NEET

2.5%

Percentage of West Sussex Young People Unknown Destination

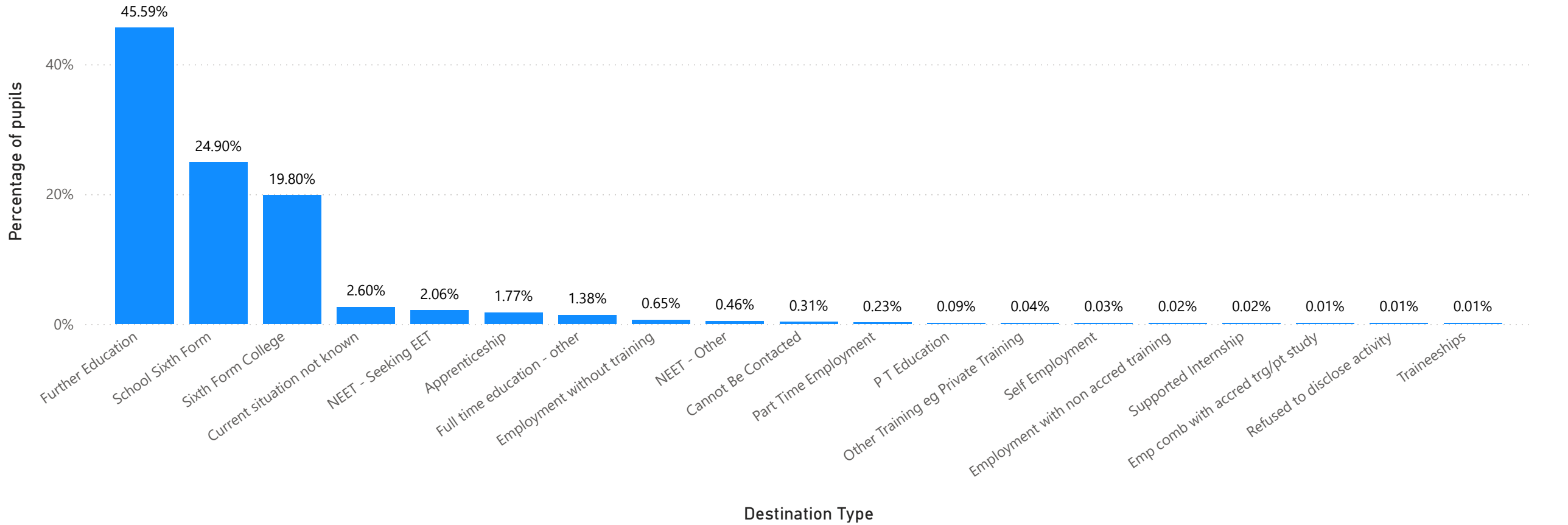
2.9%



*Please note these figures do not add up to 100% due to the suppressing of the data.

West Sussex Pupil Destinations by Destination Type

West Sussex Pupil % by Destination Type - Academic Age 16 (Year 11)

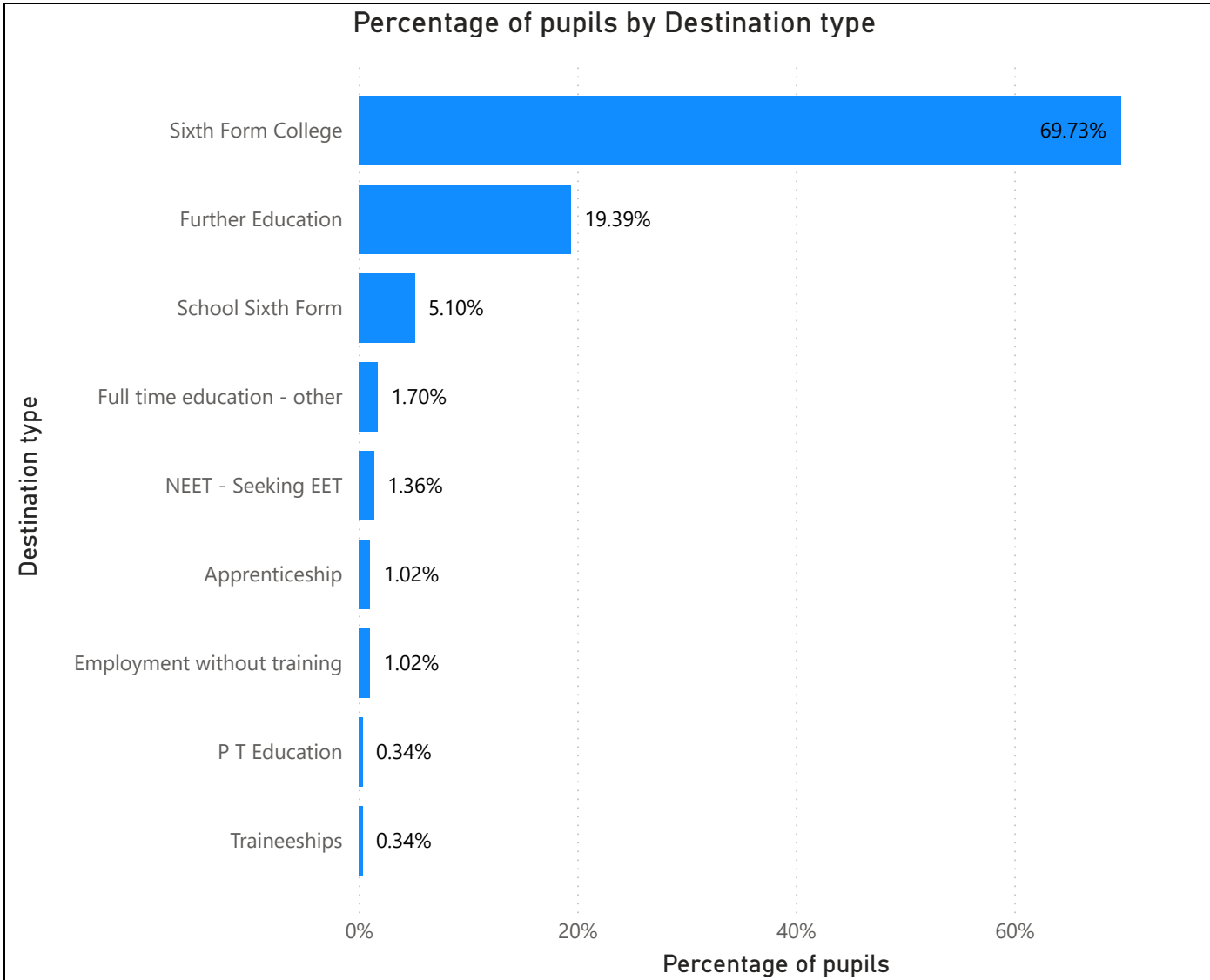


Destination of pupils by Year 11 School

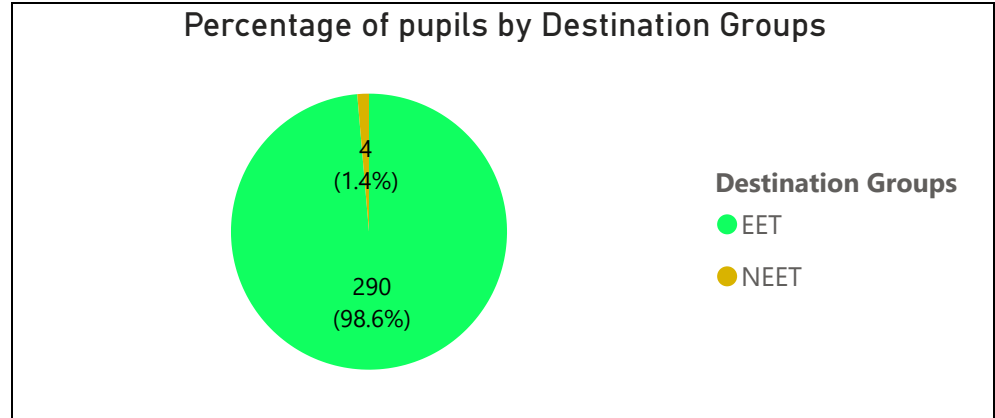
School ▼

Millais School ▼

Percentage of pupils by Destination type



Percentage of pupils by Destination Groups



Destination Groups	Number of pupils	Percentage of pupils
EET		
Apprenticeship	3	1.02%
Employment without training	3	1.02%
Full time education - other	5	1.70%
Further Education	57	19.39%
P T Education	1	0.34%
School Sixth Form	15	5.10%
Sixth Form College	205	69.73%
Traineeships	1	0.34%
NEET		
NEET - Seeking EET	4	1.36%

Destination of pupils by Year 11 School Actual Destination

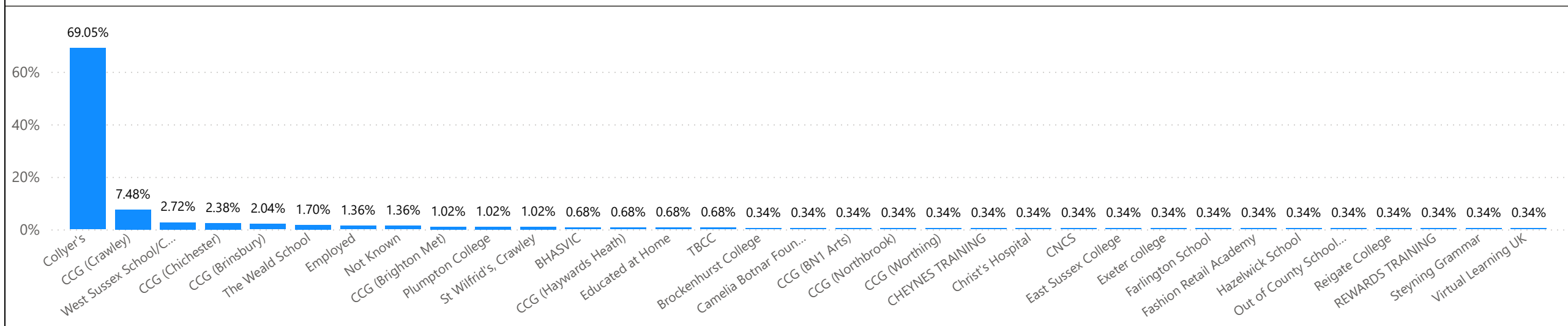
Actual Destination	Number of pupils
Collyer's	203
CCG (Crawley)	22
West Sussex School/College	8
CCG (Chichester)	7
CCG (Brinsbury)	6
The Weald School	5
Employed	4
Not Known	4
CCG (Brighton Met)	3
Plumpton College	3
St Wilfrid's, Crawley	3
BHASVIC	2
CCG (Haywards Heath)	2
Educated at Home	2
TBCC	2

Actual Destination	Number of pupils
Brockenhurst College	1
Camelia Botnar Foundation	1
CCG (BN1 Arts)	1
CCG (Northbrook)	1
CCG (Worthing)	1
CHEYNES TRAINING	1
Christ's Hospital	1
CNCS	1
East Sussex College	1
Exeter college	1
Farlington School	1
Fashion Retail Academy	1
Hazelwick School	1
Out of County School/College	1
Reigate College	1
REWARDS TRAINING	1
Steyning Grammar	1
Virtual Learning UK	1

Millais School

294
Number of pupils

% of pupils by Actual Destination



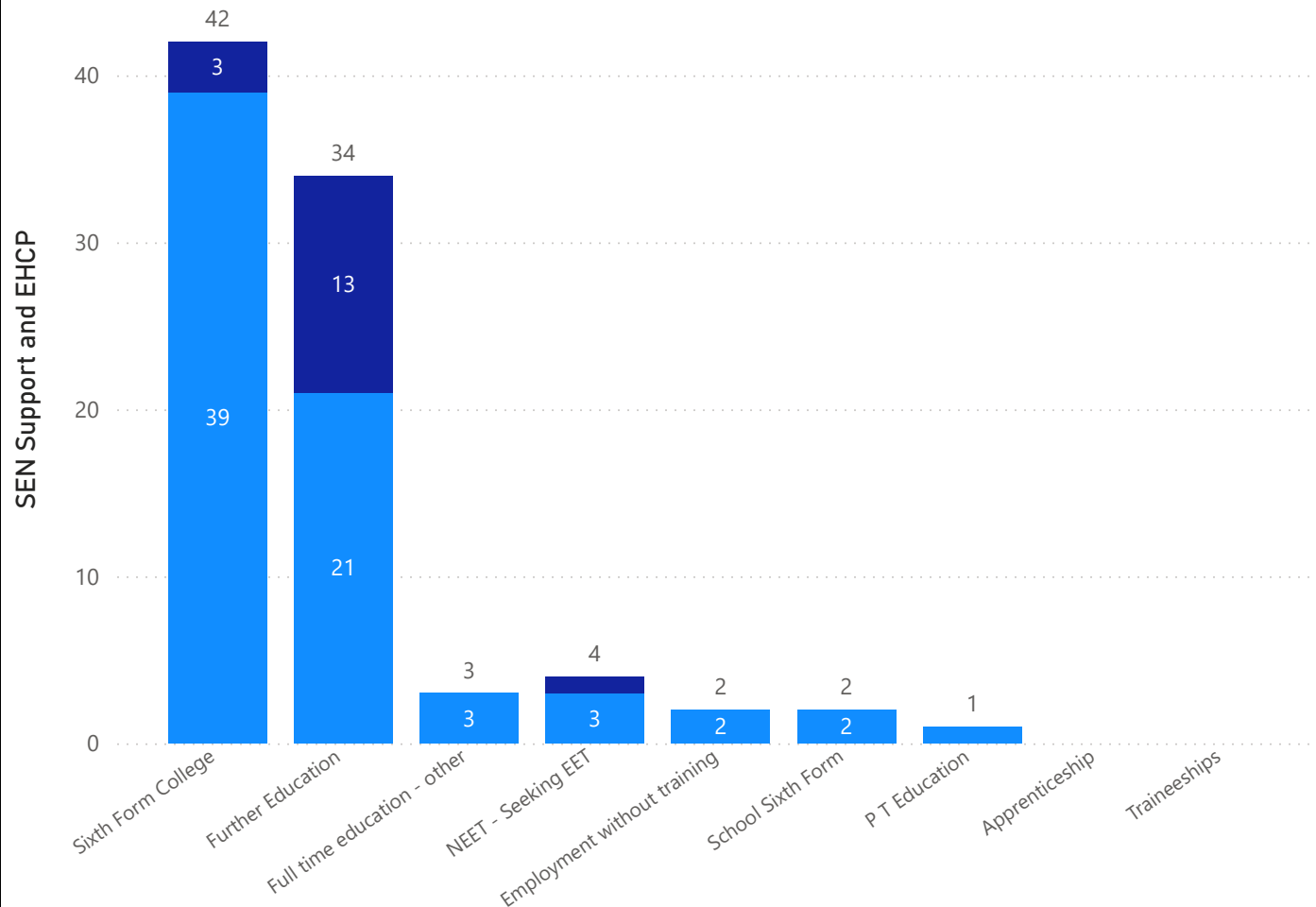
Destination of pupils by Year 11 School - SEND Destination

School

Millais School

SEN Support and EHCP by Destination type

● SEN Support ● EHCP



17
EHCP

71
SEN Support

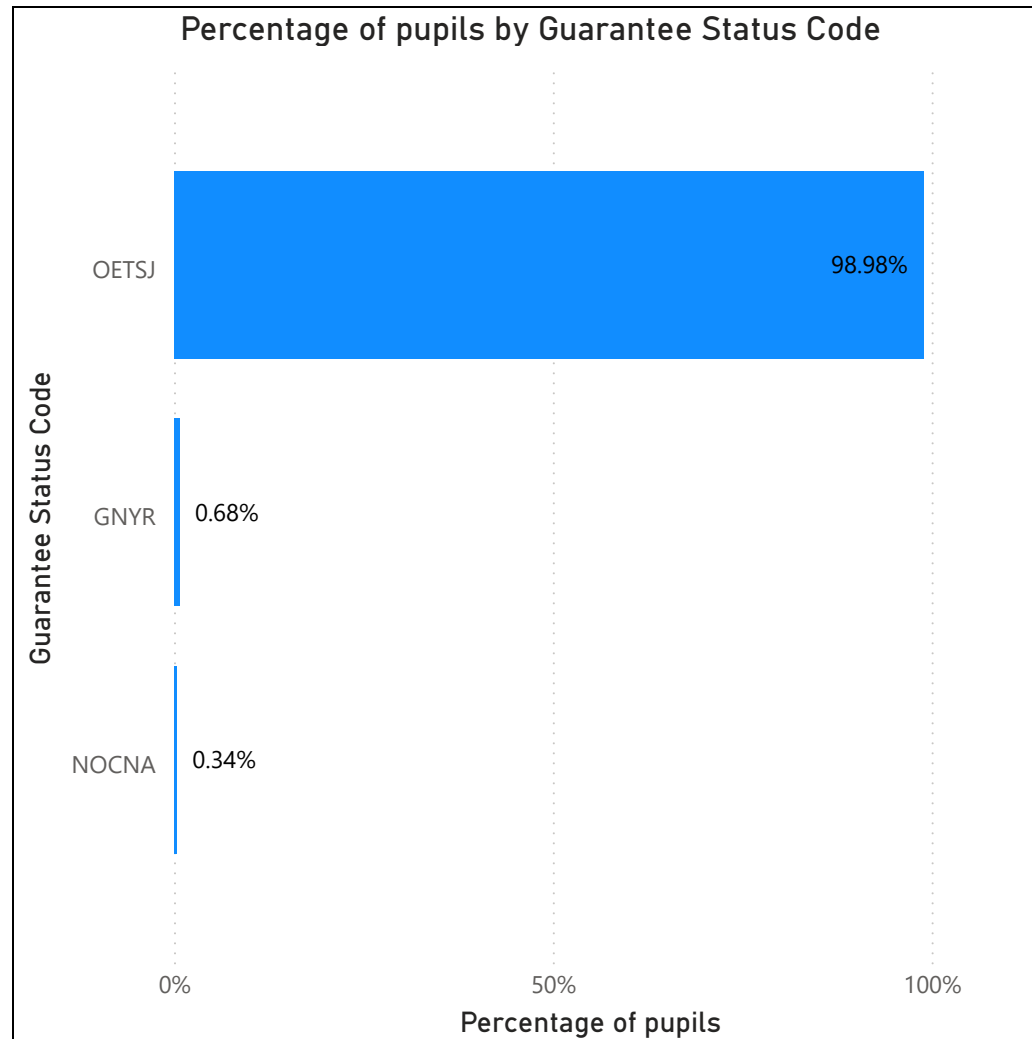
Destination Type	EHCP	SEN Support
Sixth Form College	17.65%	54.93%
Further Education	76.47%	29.58%
Full time education - other	0.00%	4.23%
NEET - Seeking EET	5.88%	4.23%
Employment without training	0.00%	2.82%
School Sixth Form	0.00%	2.82%
P T Education	0.00%	1.41%
Apprenticeship	0.00%	0.00%
Traineeships	0.00%	0.00%
Total	100.00%	100.00%

September Guarantee of pupils by Year 11 School

Please note the data collection for the data on this page closed at the end of September 2025 and can no longer be changed.

School ▼

Millais School ▼



September Guarantee Key

Guarantee Status	Guarantee Status Code
Guarantee status not yet recorded	GNYR
No Offer Made - Considering options/not applied for learning	NOCNA
Offer Made - Offer of education and training to start before Jan	OETSJ

Guarantee Status Code	Number of pupils	Percentage of pupils
OETSJ	291	98.98%
GNYR	2	0.68%
NOCNA	1	0.34%
Total	294	100.00%